

apartment floor plans
and specifications



the
lane

thelaneapartments.com.au

A

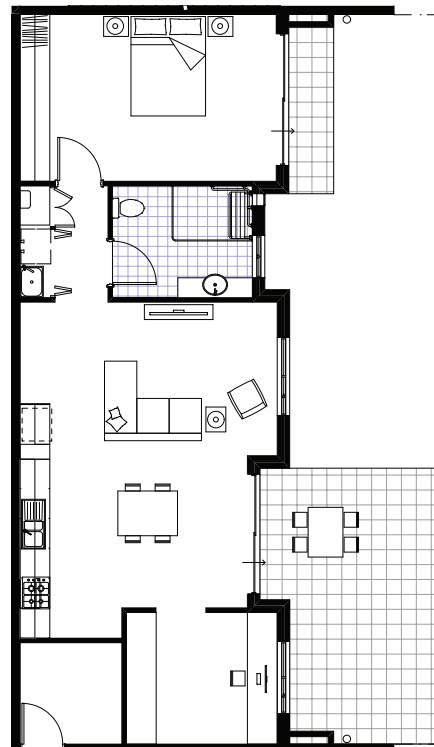
apartment no. **1, 16**
total area **78.05 sq.m**
bedrooms **2**
bathrooms **2**
ground floor

*these plan types may vary slightly
(ensuite bathroom)*



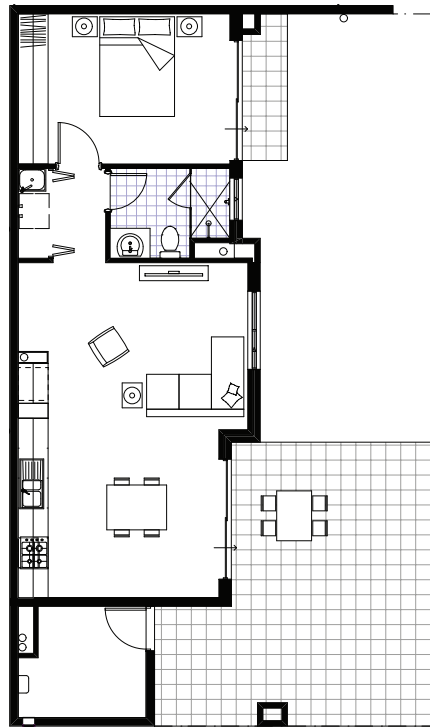
B

apartment no. **2, 17**
total area **76.5 sq.m**
bedrooms **1**
bathrooms **1**
study **1**
ground floor

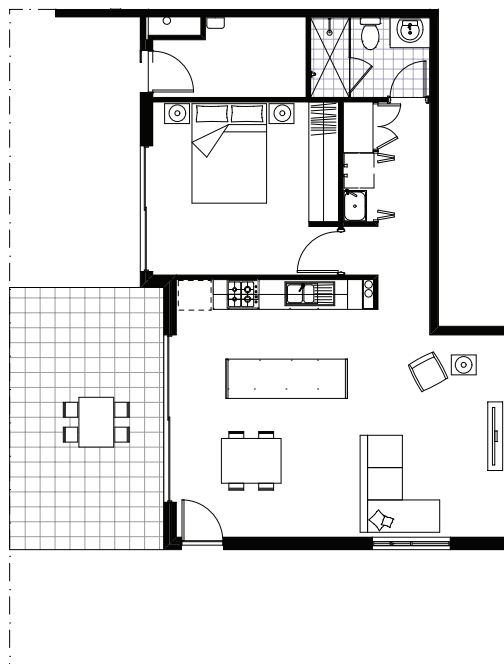




apartment no. **3**
total area **56.96 sq.m**
bedrooms **1**
bathrooms **1**
ground floor



apartment no. **18**
total area **63.4 sq.m**
bedrooms **1**
bathrooms **1**
ground floor



E

apartment no. **43-54**

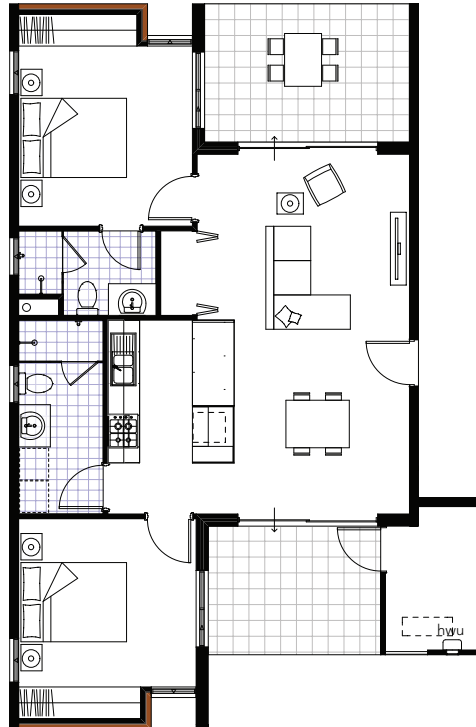
total area **77.9 sq.m**

bedrooms **2**

bathrooms **2**

all floors

*these plan types may vary slightly
(bed 2 robe)*



F

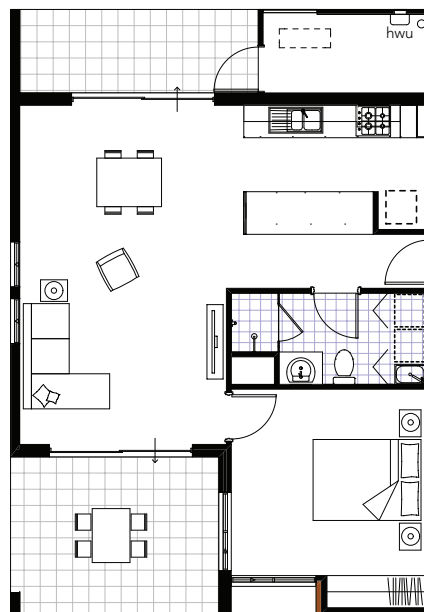
apartment no. **31, 33, 38**

total area **63 sq.m**

bedrooms **1**

bathrooms **1**

all floors





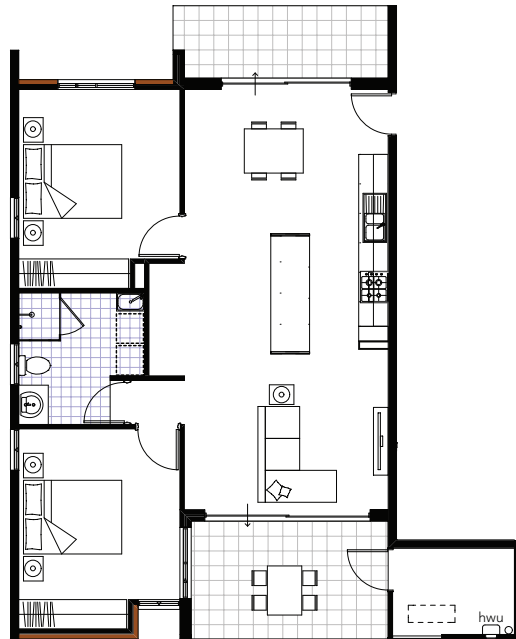
apartment no. **32, 37, 42**

total area **78.8 sq.m**

bedrooms **2**

bathrooms **1**

all floors



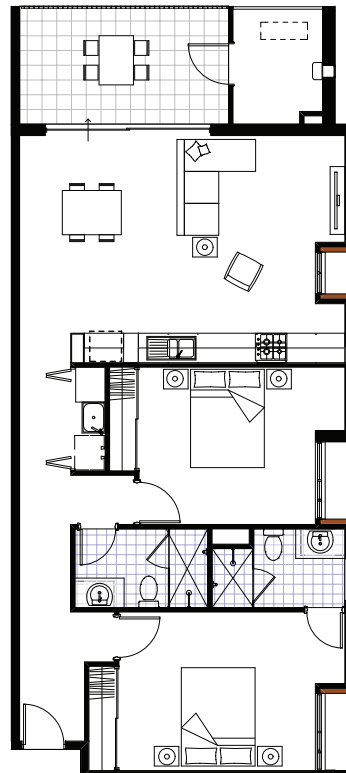
apartment no. **5, 11, 19, 25**

total area **88.5 sq.m**

bedrooms **2**

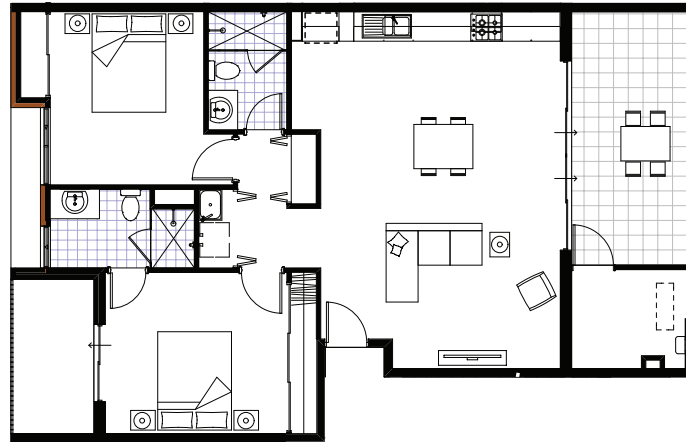
bathrooms **2**

upper floors

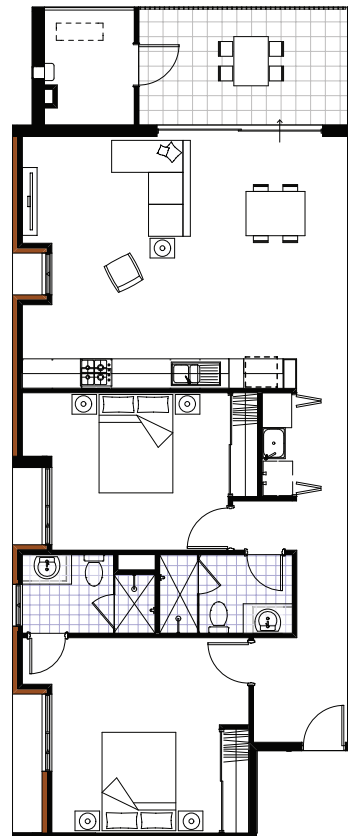




apartment no.
**6, 7, 12, 13, 21,
22, 27, 28**
total area **85.2 sq.m**
bedrooms **2**
bathrooms **2**
upper floors



apartment no.
4, 8, 10, 14, 20, 26
total area **93.3 sq.m**
bedrooms **2**
bathrooms **2**
upper floors



K

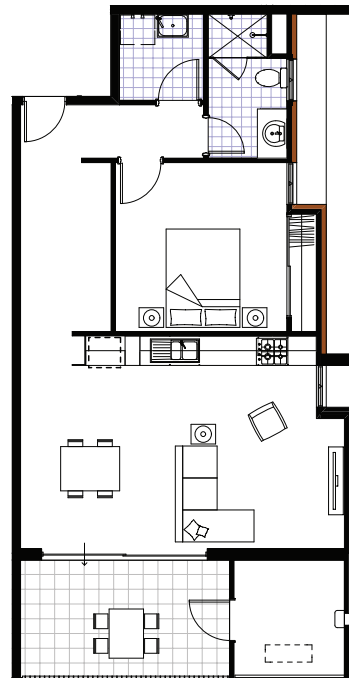
apartment no. **24, 30**

total area **66.6 sq.m**

bedrooms **1**

bathrooms **1**

upper floors



L

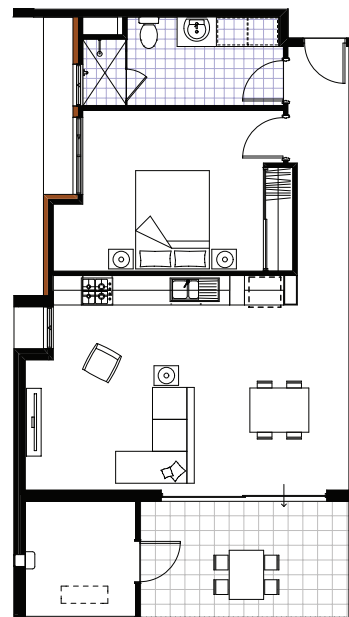
apartment no. **23, 29**

total area **61.4 sq.m**

bedrooms **1**

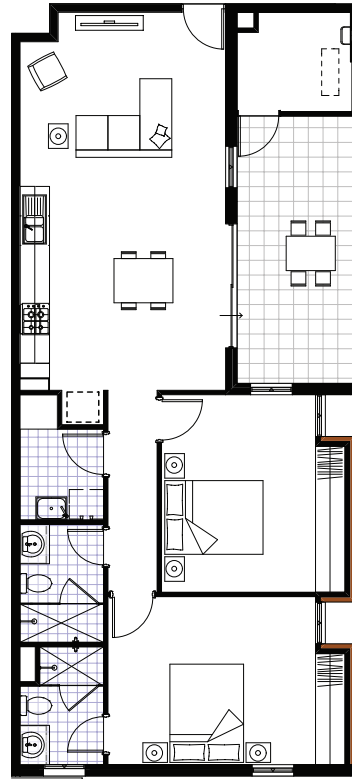
bathrooms **1**

upper floors





apartment no. **9, 15**
total area **88.4 sq.m**
bedrooms **2**
bathrooms **2**
upper floors

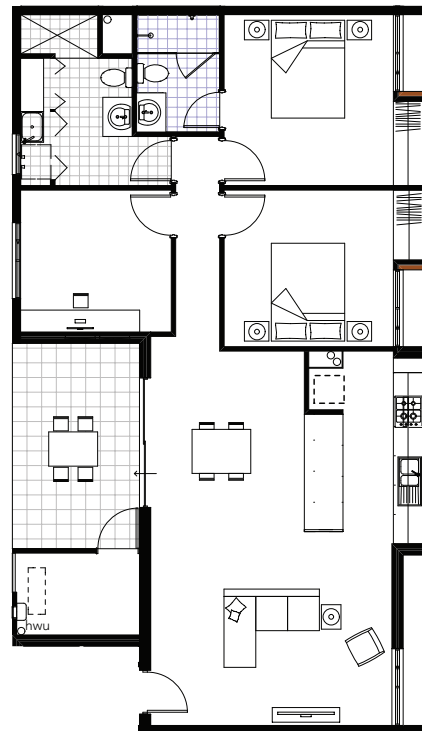


apartment no.
34, 36, 39, 41
total area **81.8 sq.m**
bedrooms **2**
bathrooms **2**
upper floors





apartment no. **35, 40**
total area **101.7 sq.m**
bedrooms **2**
bathrooms **2**
study **1**
upper floors



The following, 'apartment specifications' page shows details of construction, features and appointments that apply to the exterior and interior of each apartment type.

APARTMENT INTERIORS – ALL

KITCHEN

Benchtop

Engineered stone top to selected surfaces with 30/40mm square edge

Cabinets and Doors

Laminate finish to base and overhead units – all doors with soft closers

Pantry

Laminate finish with shelves

Drawers

Cutlery, utility and pot drawers with soft closers

Cooktop

Bosch stainless steel 600mm cooktop

Oven

Bosch stainless steel 600mm multi-function oven

Rangehood

Bosch stainless steel 600mm ducted built-in above hob

Dishwasher

Bosch Stainless Steel

Splashbacks

Ceramic tiles

Sinks

Stainless steel

BATHROOM / ENSUITE / LAUNDRY

Vanity

Laminate finish to base and doors/drawers

Tops engineered stone

Mirrors

Frameless above vanities

Shower Screens

Semi-frameless clear glass

Shower Tapware

Chrome mixer tap with shower on rail

Laundry

Stainless steel inset/vitreous china

Basins

White vitreous china

Toilets

White vitreous china close-coupled suite

Tapware

Flickmixers throughout

Accessories

Brushed stainless steel toilet roll holder and towel rails

Wall Tiles

2000mm above floor level to shower 300mm above vanity, skirting tile to other walls

GENERAL

Hot-Water System

Gas instantaneous

Bedroom Robes

Sliding doors
Shelf and rail at 1800mm above floor level

Linen Cupboards

With laminate shelving

Dryer

Included

Floor Finishes

Quality carpet to bedrooms
Large format ceramic tiles to hallways, entries, kitchen/living areas
Small format ceramic tiles to bathrooms & laundries

ELECTRICAL SERVICES

Exhaust Fans

Ducted from bathrooms and ensuites

Telephone Points

Provided to Living

Television Points

Provided to Living and Master Bedroom with cable TV Access provided to Living

Air conditioning

Split system to living area.
Ceiling fans to bedrooms

Power

All double GPO outlets with RCD protection
LED lighting where possible throughout

Security

Voice intercom and remote gate release

Smoke Alarms

Hard-wired smoke detectors

INTERNAL CONSTRUCTION ALL APARTMENTS

PARTY WALLS

Plastered double brick/concrete

INTERNAL WALLS

Plastered brick

WET-AREA WALLS

Plastered brick/concrete

SKIRTINGS

Painted 90mm MDF

CEILINGS & BULKHEADS

Generally 2400mm high painted flush plasterboard

CORNICES

70mm Coved

FRONT DOORS

Painted solid core with security lock and turn-snob

INTERNAL DOORS

Painted flush panel

CAR-PARKING

Allocated undercover bay

EXTERNAL CONSTRUCTION ALL APARTMENTS

EXTERNAL WALLS

Combination of render face brickwork
Reverse brick veneer with light weight cladding

WINDOWS & SLIDING PATIO DOORS

Clear aluminium windows and sliding doors where applicable
Obscured glass windows to bathrooms
Flyscreens to all operable windows and sliding doors

FOOTINGS & FLOOR SLABS

In situ reinforced concrete

ROOFS

Colorbond metal-deck roofing with anti-con insulation

BALCONY BALUSTRADING

Powder-coated aluminium

WALKWAY BALUSTRADING

Powder-coated aluminium

BALCONY FLOOR FINISH

Slip-resistant tiles

STAIRWELL FLOOR FINISH

Textured granolithic concrete or slip-resistant tiles

LETTERBOXES

Numbered and locking

EXTERNAL LIGHTING

LED light fittings

GATES

Framed powder-coated metal Automatic

Email us to secure your apartment today.



enquiries@thelaneapartments.com.au

nb: Whilst all reasonable care has been taken in preparation of this brochure, the information contained herein is believed, but not guaranteed, to be correct. Prospective purchasers must rely on their own enquiries. This brochure does not constitute an offer or contract. Photographs, illustrations and artist impressions/perspectives of buildings are indicative only and are subject to change without notice.